

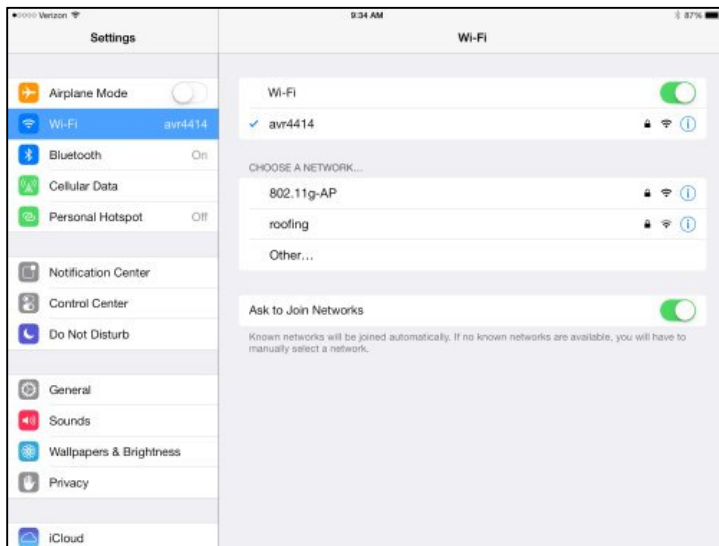
iAVRover Operating Instructions

In addition to the features explained in the AVRover instruction manual, your AVRover is equipped with its own WiFi Network and AppleTV™.

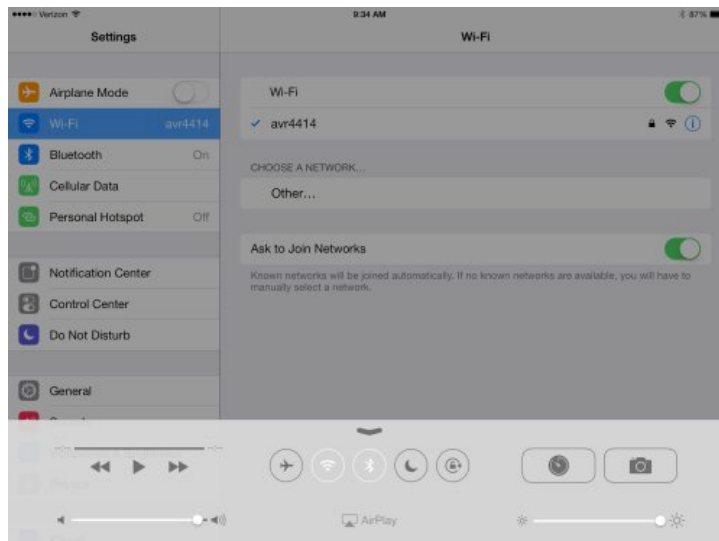
The name of the WiFi Network is avrXXXX the X's being the last 4 digits of the Serial Number of your AVRover found on the top side of the unit. The Password is set to avrover12 .

To use Mirror your iPad™ or Apple™ device.

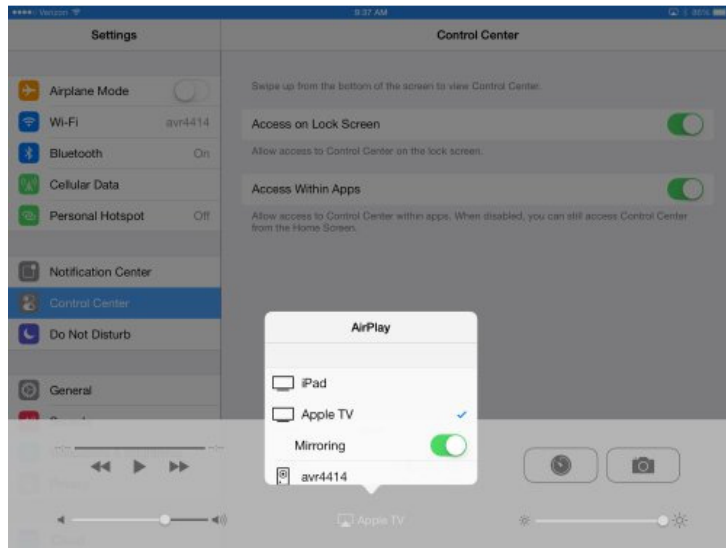
Go to Settings, WiFi and log your device onto your AVRover internal network using Password avrover12



Swipe your finger from the bottom of the screen and select “Airplay” at the bottom center.



Select Apple TV™ and Mirroring.



You can now use all of your apps and see them on the screen.



If you would also like to use the internet, plug an Ethernet cable connection at the bottom front of the AVRover next to the power cord. This connects the internet directly into the Apple AirPort Express™ unit inside the AVRover. If you have any questions or need assistance, please feel free to contact us at the numbers above.